

Installation Instructions:

Step 1: Measure wall height. Make panels at least 5/8" shorter from ceiling clearance.

Step 2: Snap a level line on all walls to be paneled. See Figure No. 1.

NOTE: For 4'-0" x 8'-0" panels, Brooklyn Hardware, LLC recommends a minimum of 4 lengths of Panelclip® on the wall and 12, 2 1/2" Panelclip® parts on the panel. For panels greater than 8', use additional Panelclip® parts as needed.

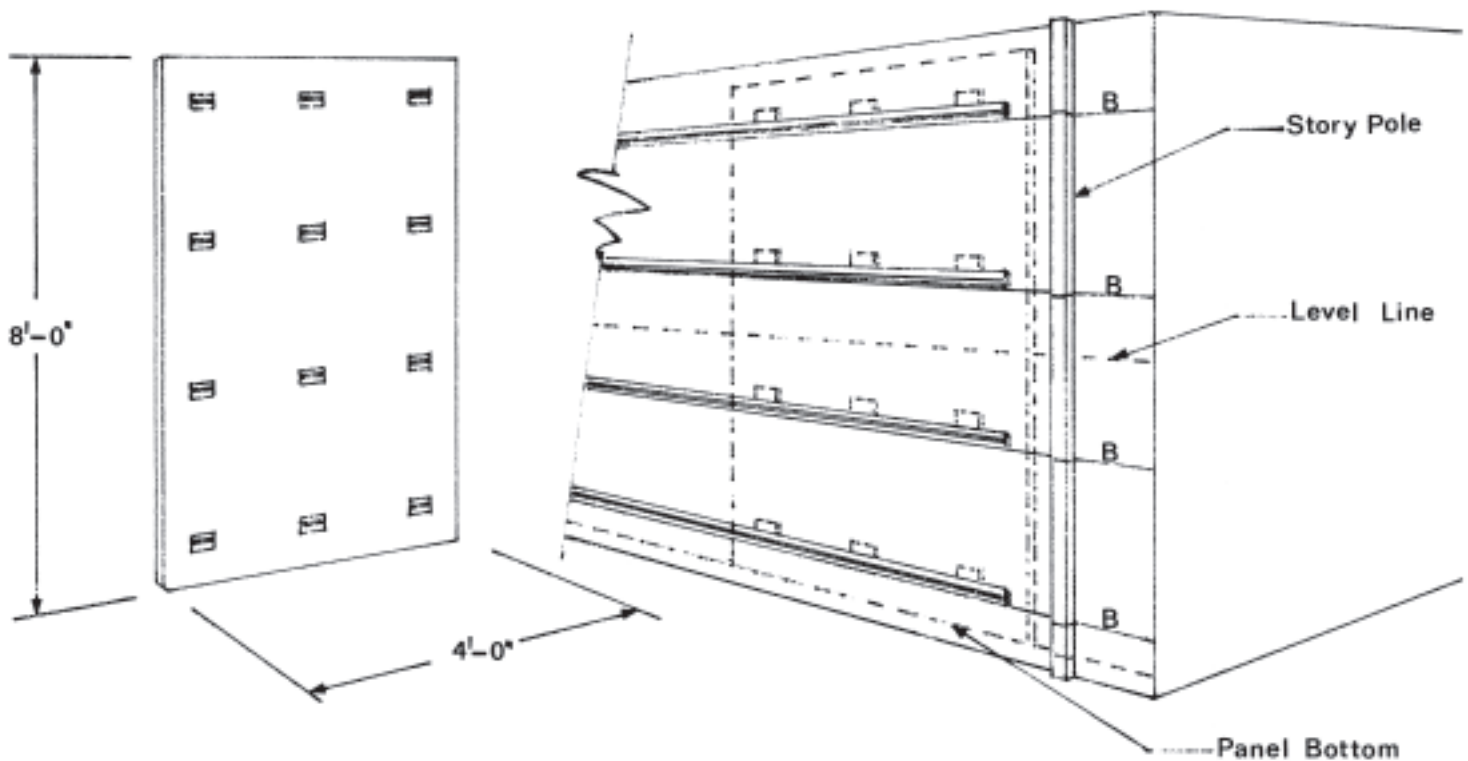


Fig.1

Step 3: Using the level line as a reference, mark the location of the bottom edge of the Panelclip® on the wall, (B line) making sure that both parts of the Panelclip® will not interfere with the electrical outlets or plumbing fixtures. See Figure No. 1.

Step 4: Using the appropriate fastener for the type of wall, attach Panelclip® to the wall with the angled surface up and facing the wall.

NOTE: Lengths of Panelclip® may need to be shimmed to compensate for wall defects.

Installation Instructions continued...

Step 5: Make a story pole the same height as the wall and approximately 3/4" by 1 1/2". Transfer the Panelclip® bottom edge line (B) to the story pole. Measure up from this line 3 1/6" and mark a parallel line (A). This is the location of the top edge of the Panelclip® on the panel. Also, transfer the line locating the bottom of the panel. See Figure No. 2.

Step 6: After aligning the panel bottom with the bottom line on the story pole, transfer the A lines to the back of the panel. See Figure No. 3.

Step 7: Align Panelclip® on the A lines on the panel back with the angles surface down and facing the panel. (BROOKLYN HARDWARE recommends 6 pair – 12 parts of Panelclip® per each 4' x 8' panel.) See Figure No. 3.

Step 8: Attach the Panelclip® with the appropriate screw for the panel material. (Pre-drill if necessary.)

Step 9: Hang panels on the wall and position side to side.

Step 10: Pull down with force to wedge the two parts of the Panelclip® together.

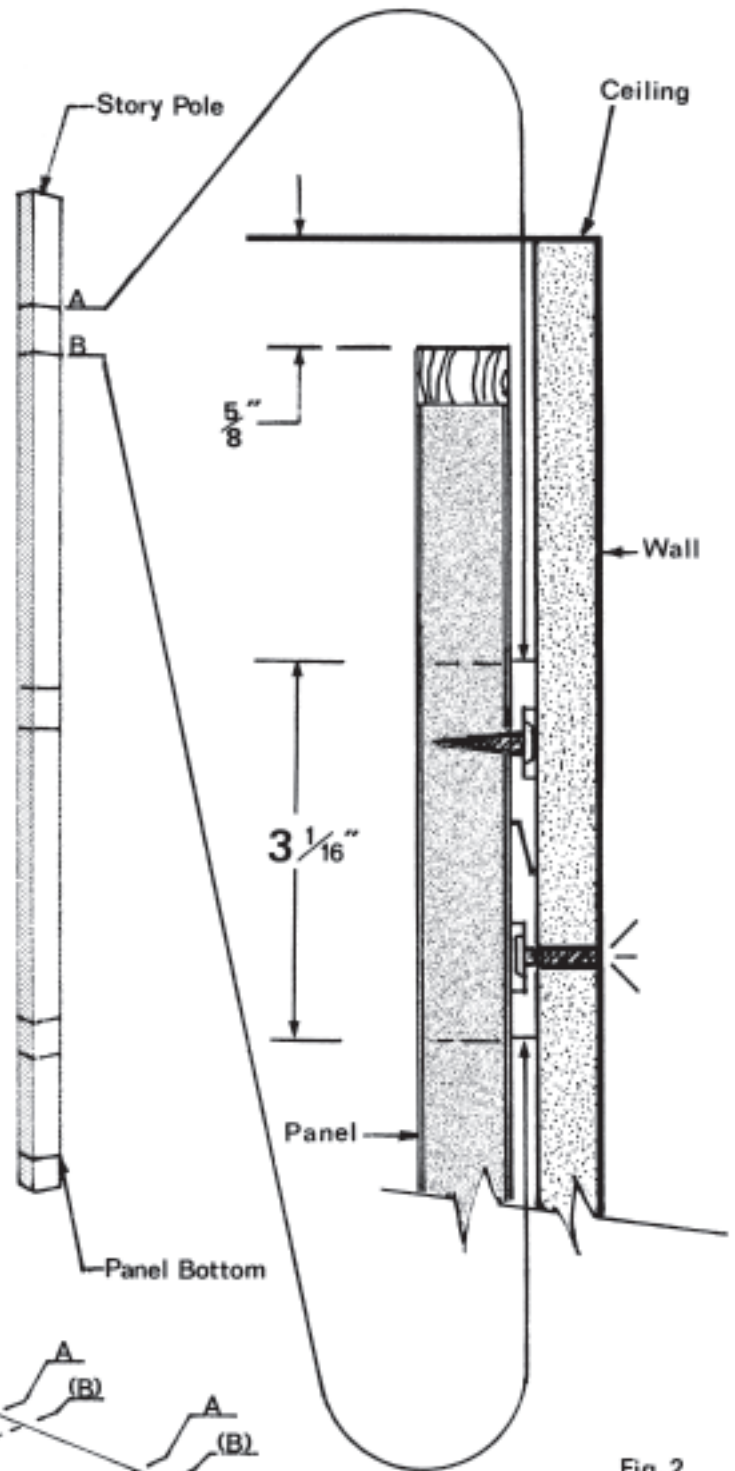


Fig. 2

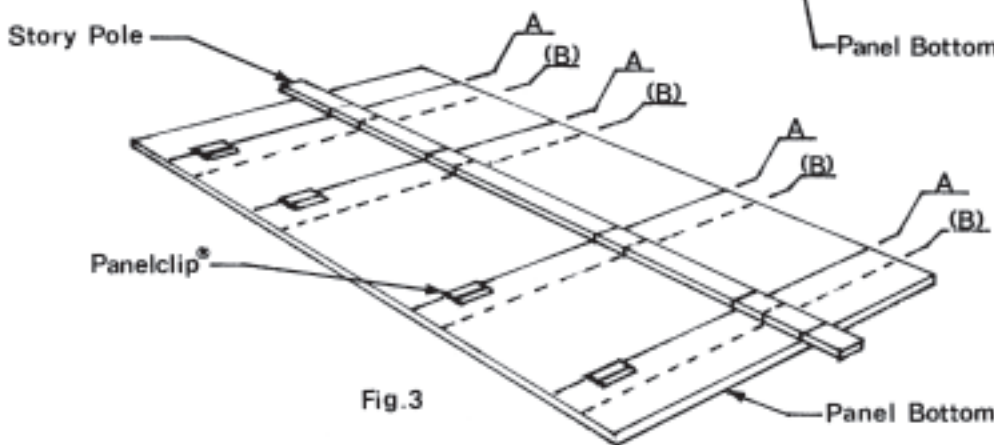


Fig. 3

Simply secure.

Call 503-232-1151 for custom orders or visit www.panelclip.com to see a distributor near you.